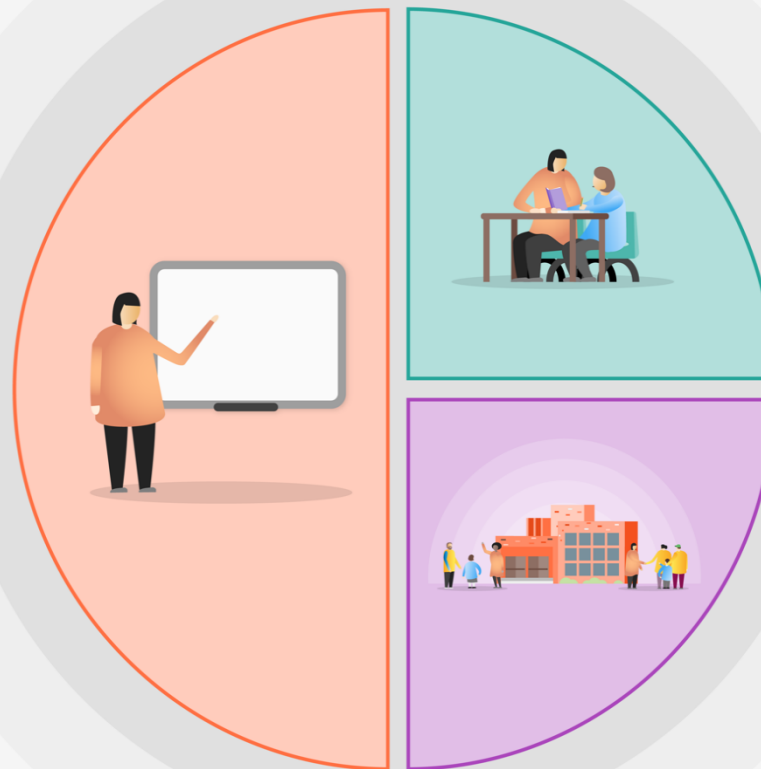




1 Teaching

- Developing high quality teaching and a broad and balanced, knowledge-based curriculum that responds to the needs of the pupils. This year: there is a whole school focus on writing.
- Professional development to support the implementation of evidence-based approaches. This year: continued SEND training for all staff; Mental Health lead training; Reasonable adjustments; Writing and Maths.
- Mentoring and coaching for teachers through appraisal process.
- Technology and other resources to support whole class teaching - review of current resources and impact on pupil progress.



2 Targeted academic support

- One to one, small group tuition
- Targeted interventions to support language development, literacy and numeracy.
- Targeted interventions and resources to meet the specific needs of disadvantaged children with SEND.
- Teaching assistant deployment and interventions.
- SATs revision club.

3 Wider strategies

- Supporting pupils' social, emotional, and behavioural needs (The Calm project)
- Support and develop extra-curricular opportunities.
- Meal provision
- Sustain weekly communications between home and school via the newsletter, Class Dojo and Texting service.

God is Love, so we Learn to Love; Love to Learn; Learn for Life