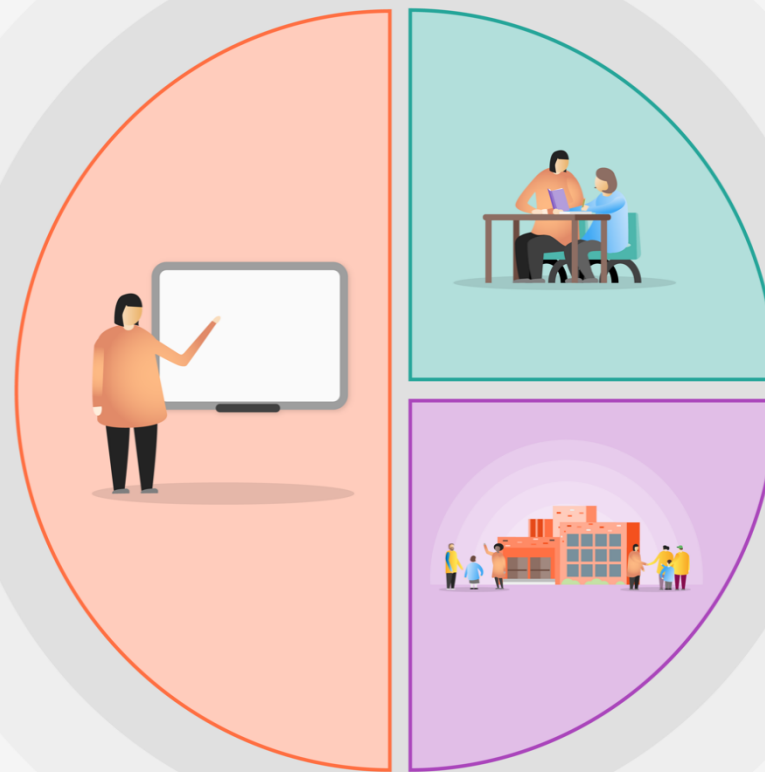




1 Teaching

- Developing high quality teaching and a broad and balanced, knowledge-based curriculum that responds to the needs of the pupils. This year: MAT development teams for foundation subjects and whole school focus on writing and maths.
- Professional development to support the implementation of evidence-based approaches. This year: SEND training for all staff; 5-a day EEF approach; NPQ for Mental Health; Reasonable adjustments.
- Mentoring and coaching for teachers
- Technology and other resources to support whole class teaching.



2 Targeted academic support

- One to one, small group tuition
- Targeted interventions to support language development, literacy and numeracy.
- Targeted interventions and resources to meet the specific needs of disadvantaged children with SEND.
- Teaching assistant deployment and interventions.

3 Wider strategies

- Supporting pupils' social, emotional, and behavioural needs (The Hope project)
- Support and develop extra-curricular opportunities.
- Meal provision
- Sustain weekly communications between home and school via the newsletter, Class Dojo and Texting service.

God is Love, so we Learn to Love; Love to Learn; Learn for Life